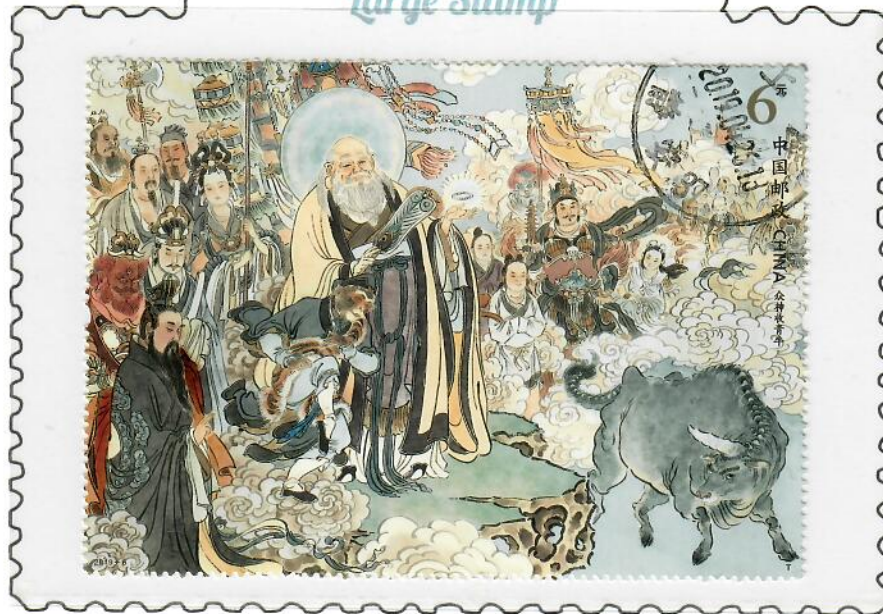


CLASSES OF STAMPS

Large Stamp



68mm x 95mm

The largest stamp in the world as of March 21, 2013 is "The Mother of Emirates" with the dimension of 1.36 x 1.77 meters. The stamp is listed as "special" postage stamp because ironically it can't actually be used as postage stamp.

The largest recorded usable postage stamp was issued in China in 1905 for express letters, measuring approximately 210 x 65 mm.

Small Stamp



22mm x 12mm



The smallest stamp in the world was issued by the Columbian department of Bolivar in 1863. They are the denominations of 10 centavos and 1 peso. It measures only 8 x 9.5 mm.

STAMP SHEET



CLASSES OF STAMPS

Miniature Sheet



Mint Stamp



With Selvage



Used Stamp



Overprint

CLASSES OF STAMPS

Se-tenant

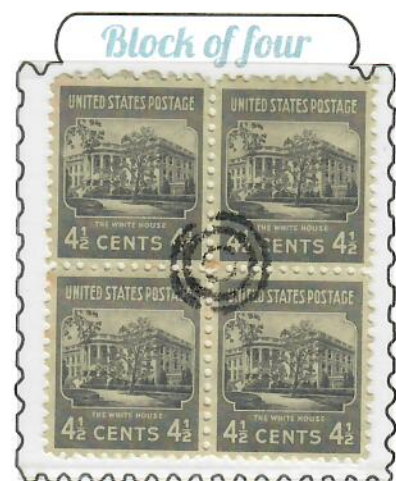
means "Joined together", and it refers to stamps of **different designs** that are printed together in one sheet, but all have the **same denomination** or (face value).



Se-tenant Continuous



Block of four



Socked-on-the-nose cancel



Punched cancel



CLASSES OF STAMPS



Imperforate



Hyphenhole



Perforated Initials



Make-up Rate

USPS Meter Postage Label



Self Sticking



Counterfeit



Datamatrix Code



CLASSES OF STAMPS



Treasury



Newspaper



Postage Due



Telegraphs



Stamp Duty



Railway Charges



Land Deeds



Law Courts



Express Delivery



Inland Revenue

CLASSES OF STAMPS

Special Handling



Special Delivery



Thrift Stamp



Popcorn Wagon
16.7 USA 1902

Bulk Rate

Bulk Rate



Carreta 1770s
7.6 USA

Nonprofit

Nonprofit



War Department



CLASSES OF STAMPS



Printing Error

Bavaria - 1865



Return Postage

Great Britain - May 1840



1st Postage Stamp



The 1903 4d *Lake Taupo Invert* of New Zealand is one of the rarest stamp in the country with only one example known to exist.

September 2025 - sold \$263,250 to a US buyer.



The *Inverted Jenny* is one of the most famous and valuable postage stamps in the world. The original stamps were issued by the U.S. Post Office in 1918. While 8 of the misprinted sheets were destroyed, one sheet escaped quality control and sold to a stamp collector for its face value of \$24.

November 2023 - sold over \$2 million USD.

Plate Proof



Proof is a trial or test impression of a stamp made before the final printing. It is used to check the design, engraving and colours before it goes to postal authorities for approval of the design. This will help to detect and correct errors before mass production.

CLASSES OF STAMPS

Joint Issue



U.S.A.

Spain

Two (or few) different countries release postage stamps with the same or very similar design usually to commemorate a shared event or anniversary.

Omnibus Issue



Bahamas

Cayman Islands

Ceylon

Large group of countries often former colonies or member of commonwealth issue stamps with the same design or theme, sometimes with slight variations.

Cuba



Philippines



Spain

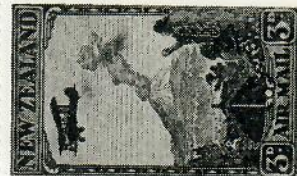


Older Omnibus Issue

CLASSES OF STAMPS

Essay for 1932 Airmail

60th ANNIVERSARY
 SYDNEY - CHRISTCHURCH
 TRANS-TASMAN FLIGHT
 BY
 SIR CHARLES KINGSFORD-SMITH
 10th SEPTEMBER, 1928



Essay for proposed 1932 Airmail issue.
 Produced by STIRLING & CO. LTD., Box 949
 Christchurch, New Zealand.

Cinderella Stamp

High Kingdom of Fantippo



www.embark.to/fantippo

Made for campaigns, propaganda, or by private fantasy stamp makers for collectors. In this stamp, this is for campaign for health awareness. The real Fantippo postal issues were only in the 1880's - 1910's,

CLASSES OF STAMPS

Cinderella Stamp

GRANDS CLASSIQUES



LA VICTOIRE DE SAMOTHRACE

MUSÉE DU LOUVRE, PARIS



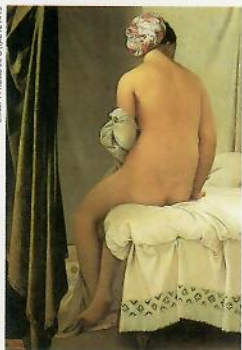
LA JOCONDE Léonard de Vinci

MUSÉE DU LOUVRE, PARIS



LA VENUS DE MILO

MUSÉE DU LOUVRE, PARIS



INGRES La baigneuse, 1808

MUSÉE DU LOUVRE, PARIS



BOTTICELLI Venus et les Grâces, détail

MUSÉE DU LOUVRE, PARIS



DELACROIX La Liberté guidant le peuple

MUSÉE DU LOUVRE, PARIS

STAMP® est une vignette de collection, son utilisation ne dispense pas d'affranchir les lettres au tarif postal en vigueur.

STAMP® is not a poststamp, it's a vignette for collectors. It doesn't exempt you to stamp your letters at postage rates.

このスタンプというものはコレクション用の切手であって、郵便の切手に換えられるものではない。

STAMP / ref. MO101 / PROMO-INFO / Photos RMN
Printed in France

The artwork shows are the vignette for collectors means the image was designed to look like a stamp but purely for artistic or promotional use.

CLASSES OF STAMPS

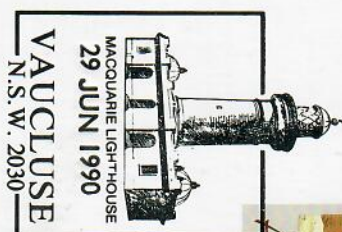
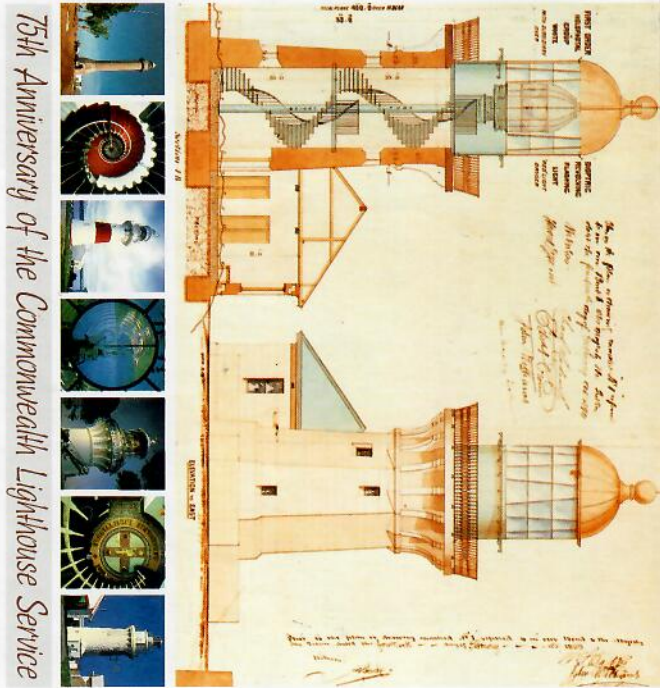
First Day Cover

New Zealand Post Office First Day Cover 1978



CLASSES OF STAMPS

Postal Stationary



CLASSES OF STAMPS

SPECIALIZED

THE PENNY UNIVERSAL

NEW ZEALAND'S MOST INTERESTING STAMP

12 DIFFERENT PRINTINGS (Cat. Value \$7.00) – \$4.50

FULL DETAILS OF THE DIFFERENCES SHOWN OVERLEAF

LONDON PRINT
No Watermark



BASTED MILLS
Perf 14



COWAN PAPER
Watermarked. Perf 14



ROYLE PLATE
Perf 14



WATERLOW PAPER
Perf 11



BASTED MILLS
Perf 11 x 14



DOT PLATE
Perf 14



ROYLE PLATE
Perf 14 x 14½



WATERLOW PAPER
Perf 14



COWAN MEDIUM PAPER
No Watermark. Perf 14



WATERLOW TRIAL
Perf 14



REDRAWN PLATE
Perf 14 x 15



CLASSES OF STAMPS

1822 - 1830

Pre - Stamp Period



Pre - Stamp Period



REVENUE STAMPS

1760 - 1820

George III & IV



Single X Shillings
Deeds Cypher George III
2nd type Unrecut #352



Company Duty
13/- 1801 George III
2nd type Unrecut #458



Company Duty
£1 - 5/- George III
2nd type, 3rd recut #444



£1 - 10/- George III 1804
2nd type, 2nd recut #344



£1 - 15/- Cypher George III
2nd type, 3rd recut #463



£1 George IV unrecut
Royal cypher #284
(1790-1820)



£1 Royal cypher George III
2nd type, 3rd recut #402



£3 Royal cypher George III
2nd type, 3rd recut #333

THEMATICS

Aircraft



Trains



Sports



Christmas



Birds



Fishes

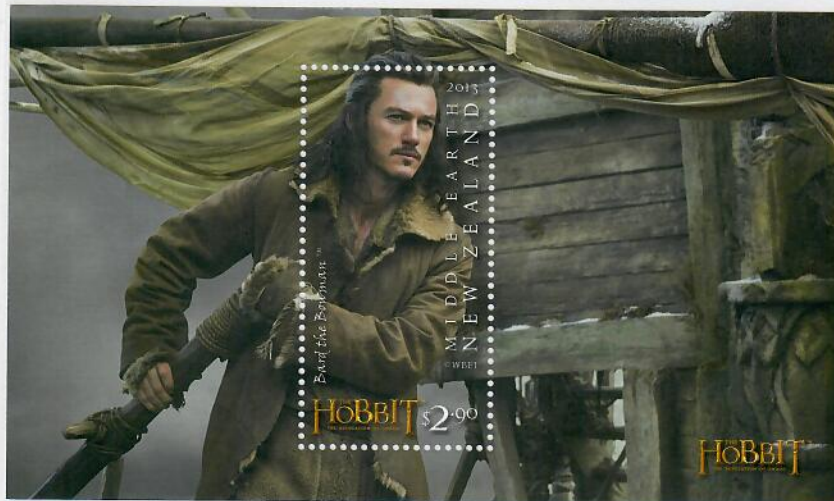


Flowers

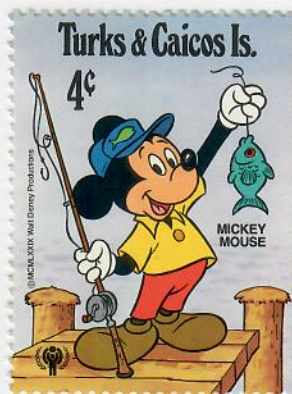


THEMATICS

Movies



Disney Characters



Famous Personalities





Wellington, New Zealand